

# A NOVEL TREATMENT MODALITY FOR PREMENOPAUSE FEMALE SEXUAL DYSFUNCTION



**Laszlo Kornya MD**

*Department of Obstetrics & Gynecology Oncology  
Central Hospital of Southern Budapest  
National Institute of Hematology & Infectious  
Diseases, Budapest, Hungary*



## INTRODUCTION

# FSD – NOT ONLY IN MIDDLE-AGED WOMEN

- ❖ High (**43%**) overall prevalence of FSD in reproductive-age women worldwide<sup>1</sup>
- ❖ **55%** of women partners of men with ED<sup>2</sup>
- ❖ **4/10** students show a risk of having FSD<sup>3</sup>

## FSD as a warning sign?



FSD as the tip of the iceberg of many common chronic diseases<sup>4</sup>

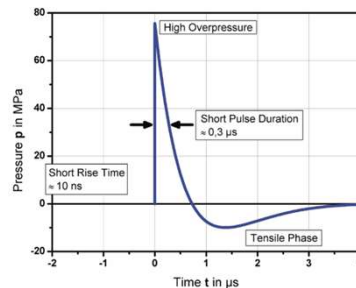
1. McCool-Myers M, Theurich M, Zuelke A, Knuettel H, Apfelbacher C. BMC Womens Health. 2018 Jun 22;18(1):108.
2. Greenstein A, Abramov L, Matzkin H, Chen J. Int J Impot Res. 2006 Jan-Feb;18(1):44-6.
3. Halle-Ekane GE, Timti LF, Tanue EA, Ekukole CM MD, Yenshu EV. Sex Med. 2021;9(5):100402.
4. Di Stasi, V., Verde, N., Maseroli, E. et al. Curr Sex Health Rep 11, 307–319 (2019).

## INTRODUCTION

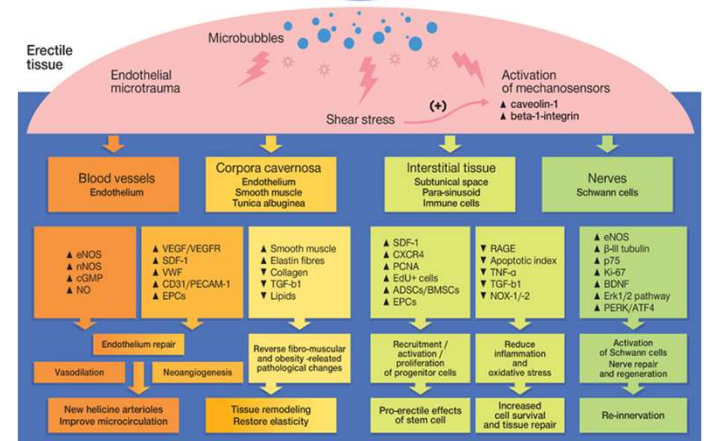
# EMERGING INDICATIONS OF LI-ESWT IN UROGYNECOLOGY

## Energy-Based Devices in Urogynecology

- ❖ Lasers (microablative fractional CO<sub>2</sub>, non-ablative Er:YAG, hybrid fractional)
- ❖ Radiofrequency (RF) devices
- ❖ Neuromodulation (sacral, percutaneous tibial nerve stimulation, vagal nerve stimulation)
- ❖ **Low-intensity extracorporeal shockwave therapy (LI-ESWT)**
  - Application on the external genitalia – using available probes
  - Transvaginal application (TVST)



## LI-ESWT



## LI-ESWT in Urogynecology

- ❖ Overactive Bladder – Urge Incontinence
- ❖ Stress Urinary Incontinence (SUI)
- ❖ Female Sexual Dysfunction (FSD)
- ❖ Hypoactive bladder
- ❖ Vaginal laxity

## METHODS

# MORENOVA™ LI-ESWT FOR PREMENOPAUSAL WOMEN

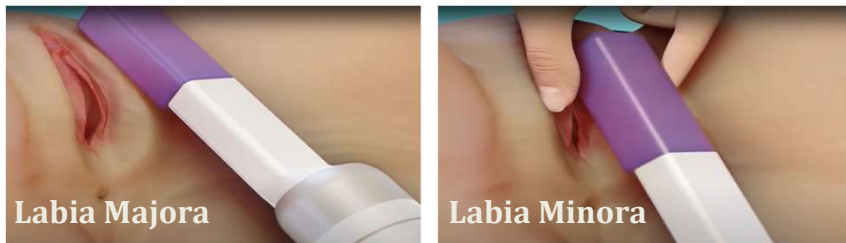
- ❖ N = 15 premenopause female patients with self-reported sexual dysfunction
- ❖ Patients' age: 30-46 yrs
- ❖ Large-Area LI-ESWT with **MoreNova™** device for transvaginal treatment
  - Energy density: 0.09 mJoule/mm<sup>2</sup>
  - Treated areas: vaginal wall, labium minora & majora
  - Protocol: 6 sessions (~20 min each); 2 sessions/week



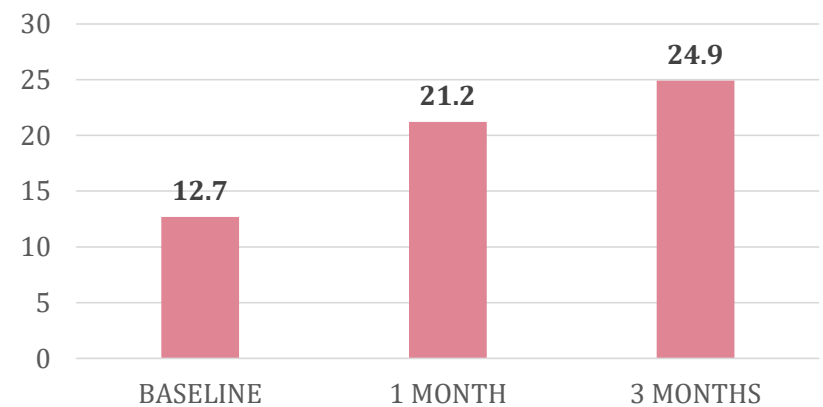
## RESULTS

# SIGNIFICANT INCREASE IN FSFI SCORES

- ❖ All 15 patients concluded the treatment
  - 14 patients are cooperating fully with the follow up visits



### FSFI Score Post-Treatment



## DISCUSSION & CONCLUSIONS

# MORENOVA™ – A PROMISING SOLUTION FOR FSD

- ✓ Safe without any complications
- ✓ Very well tolerated by all patients
- ✓ Efficient, significant improvement in all aspects of FSD in short-term follow-up
  - Significant increase in FSFI scores at 3 months
- ✓ Longer follow-up in larger patient populations is required
  - FSD is highly common among women of menopause age, but also of younger ages; further clinical research in treatment of premenopause women suffering GSM or non-GSM FSD

## DISCUSSION & CONCLUSIONS

# LI-ESWT IN FUTURE PREVENTION STRATEGIES

- ❖ FSD affects millions of women worldwide
  - The high prevalence signals the importance of integrating **early-stage non-surgical and non-pharmacological solutions**, that could result in a reversal and prevention of symptoms, if addressed appropriately
- ❖ Times appear to be changing
  - Clinical and academic interest in FSD lately increased (though overlooked for many years<sup>1</sup>)
  - More women seek medical attention
- ❖ LI-ESWT seems to be a value-based solution for FSD care

# DISCLOSURE

- ❖ Complying with regulations concerning the transparency of event funding and to guarantee accuracy of scientific contents, this disclosure certifies that in the past 2 years:
  - I have collaborated with the following company, which have commercial interests in the healthcare area:
    - Medical research consultation and protocols design – for Hikkonu Ltd (Direx Group member), developer of the device
  - I have no commercial interests



**Thank You!**